

A-MeP FOR MVR - MFR

TECHNICAL DATASHEET

A-MeP Automatic extrusion plastometer is an extremely reliable instrument to meet all laboratory requirements, both for quality control and for R & D. A-MeP allows the determination of the Melt Flow Rate, basic test to characterize thermoplastic materials, in strict accordance with the International standards, with an automatic procedure. Beyond the determination it allows you to enter data with touch screen.



- Integrated microprocessor for test management.
- PID electronic thermoregulation system with microprocessor –accuracy 0.1°C, working temperature: 80° ÷ 400°C.
- Configuration of the test parameters (temperature, pre-heating time, space of acquisition, density of the material, add-on weight): 28 preset conditions.
- Detection of 10 to 50 measurements each sample
- Automatic weight lifter (4 weights) fully governed by the control electronics in order to perform easily: material pressing, pre-heating with or without add-on weight, repeatability of the test starting position.
- 2.16, 5, 10, 21.6 kg add-on weights (different add-on weights on request)
- Thermal stability: ±0.2°C in the test area.
- Test chamber: Ø 9.55 mm, steel (52/55 HRC).
- Piston: Ø 9.474 mm, height of the pressing part 6.35 mm, steel (45/50 HRC), equipped with thermally insulated guiding double collar, weight 0.325 g.
- Die: inner Ø of the hole 2.095 mm, length 8 mm, steel (60/65 HRC).
- The instrument is equipped with a cutting device of the extruded material, governed by an electronic timer which activates the blade automatically according to preset times, or operated manually any time, with a push-button.
- Tilting furnace for easy cleaning of heating chamber
- Heating system
- USB port for PC connection
- Dimensions: 600 x 430 x 860/900 h mm
- Weight: approx. kg 80
- Power supply: 230V, 50Hz, 0.5 kVA

Reference standards

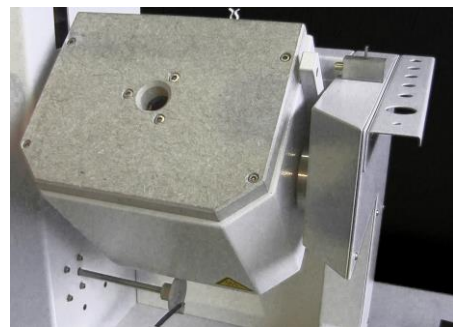
ASTM	D1238 Meth. A-B	D2116	D3159	D3364
ISO	1133			
UNI	5640			

Technical features:



- Touch screen interface, colour LCD

Settings and data management
 Display of the last test performed
 Facility to reject odd values, with reference to either other determinations, or tested material, or both



Tilting furnace for easy cleaning of heating chamber

Standard configuration includes:

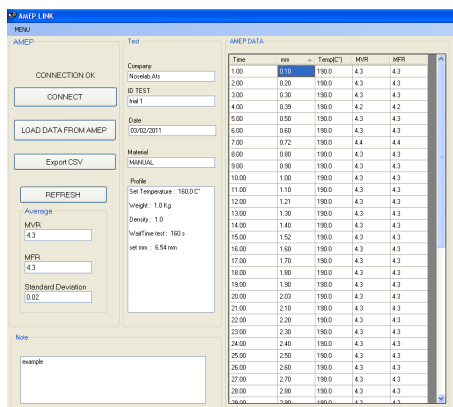
- Standard die (inner hole Ø2,09x8h mm)
- Funnel for sample loading
- Tool for sample pressing
- Die cleaning tool
- Scraping tool for test chamber cleaning
- Swabber tool for test chamber cleaning
- Split head tool to accommodate cloth for test chamber cleaning
- Set of spare blades for the cutting device (5 pcs.)



Optional

A-MeP Link Software

- Graphic display of the data
- Display of the last test performed
- Facility to reject odd values, with reference to either other determinations, or tested material, or both.
- Calculation of the average value and of the standard deviation of the accepted measurements.
- Data export in csv format (excel compatible)
- Print-out of the current or filed determinations, with average and value and standard deviation



Lifting

When choosing the weights to be used the pairs of blocks are applied in the appropriate seat, Three pairs of blocks (A-B-C) to be used to select the different combinations of weights.



Hastelloy A-MeP

An A-MeP model for the performance of measurements of corrosive thermoplastics is also available. Test chamber, piston and die in Hastelloy are supplied. Other accessories as per Standard model. In accordance with ASTM D 3364 the optional Hastelloy die (10002036) hole 2.095 mm, length 25.43 mm is also necessary.

Code	Description
00100107	A-Mep Link Software
10002215	Automatic Extrusion plastometer A-MeP
10002217	Automatic Hastelloy Extrusion plast. A-MeP

Dies for Melt Flow Rate

Code	Dimensions and material
10002023	Standard, 2,09 x 8 h mm hole Ø, steel made
10002024	Standard, 2,09 x 25 h mm hole Ø, steel made
10002019	Standard, 2,09 x 8 h mm hole Ø, Hastelloy made
10002036	Standard, 2,09 x 25,43 h mm hole Ø, Hastelloy made, for determinations according to ASTM D 3364
10002015	1,18 x 8 h mm hole Ø, steel made
10002016	1,17 (± 0,01 mm) x 8 h mm hole Ø, steel made
10002018	1,047 x 8 h mm hole Ø, steel made

Control accessories

Code	Description
10002066	Box bubble level
10002074	Go no-go gauge for standard die (inner dia of the hole 2.095 mm ± 0.005, length 8 mm)
01020201	Certificate of calibration go no-go gauge

Cleaning device

Code	Description
10002082	Test chamber cleaning tool
10002085	Cloth for cleaning device 500 pcs. – 60-mm Ø